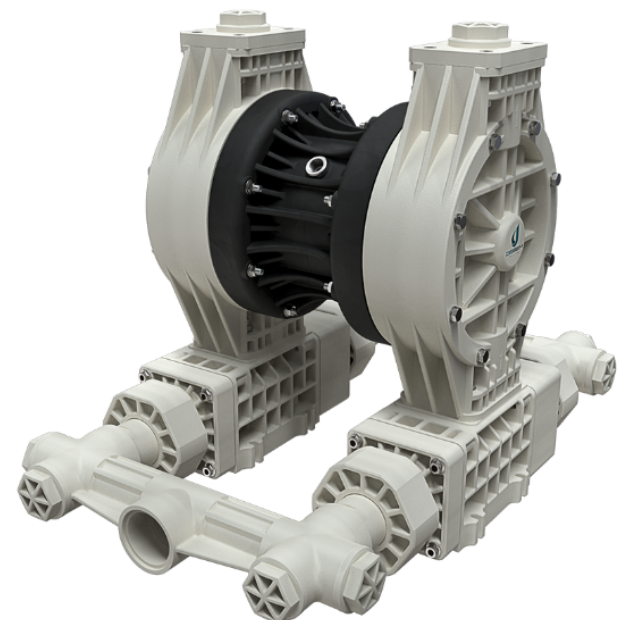






# FULLFLOW AOD PUMP RANGE

AIR OPERATED DOUBLE DIAPHRAGM PUMPS



-  MAX FLOW RATE 530L/MIN
-  SELF PRIMING
-  DRY OPERATION
-  ADJUSTABLE OPERATING SPEED

## FULLFLOW 502 AOD OVERVIEW

The Crest Debem Fullflow 502 is a unique pump of its kind. The Fullflow 502 is fitted with flaps instead of the classic ball valves, which allow the passage of large-sized solids, reducing at the same time the crushing normally associated to the passage through balls and cages.

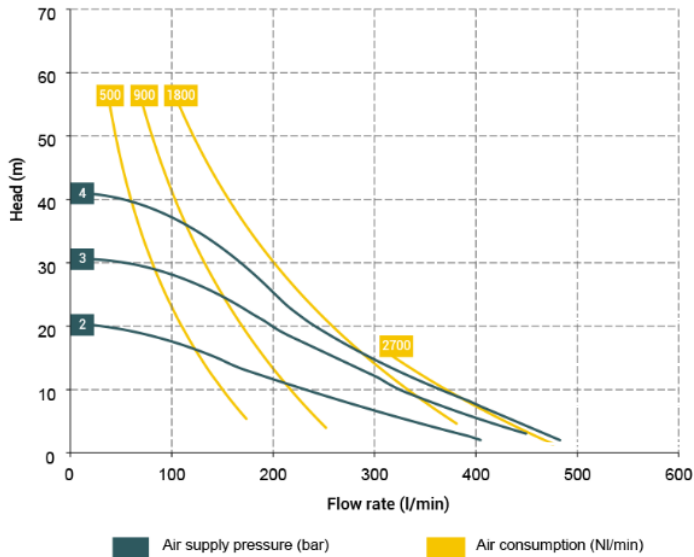
Even though the maximum diameter for the passage of solids of 45mm is not exclusive, the uniqueness for this type of pump lies in the maximum length of the solids: 600mm.

Similarly, the pump features an exclusive patented circuit positioned below, perpendicularly to the fluid chambers instead of being in axis. The fluid dynamics of this choice ensure that the solids transit outside the pump casing, following a linear path at a lower level to the pump.

The maximum flow rate is about 530 litres per minute.

# FULLFLOW AOD PUMP RANGE

## AIR OPERATED DOUBLE DIAPHRAGM PUMPS



\* The performance values refer to primed pumps (with water at 20°C) with open outlet and vary based on the construction materials

\*\* Attention: average values of the different materials configurations for ball and ball seat.

## TECHNICAL SPECIFICATION

	FULLFLOW 502
Suction / delivery connections	G 2" 1/2 f o DN 65
Air Fitting	G 1/2 "f
Max. Flow rate	530 l/min
Max supply air pressure	4 bar
Max. Head	40 m
Max negative suction head - dry running	3.5 m
Diameter max suspended solids	45 mm
Max length of solids	600 mm