

SURGE PUMP RANGE



VERTICAL, **SEAL-LESS**, THERMOPLASTIC, CENTRIFUGAL PUMPS



**MANUFACTURED
IN THE UK**

- ∞ CAPACITY 57 M³/Hr
- ∞ HEAD 38M
- ∞ 400MM COLUMN LENGTH
- ∞ SOLIDS PUMPING CAPABILITIES
- ∞ HEAVY DUTY CANTILEVER SHAFT
- ∞ POLYPROPYLENE/PVDF BUILD

Part of the
**VERTICAL IMMERSIBLE
Pump Range**



SURGE



CSS



PPS

INCREASED EFFICIENCY

The new Surge range replaces the previous VSL range of vertical immersible corrosion resistant pumps. The Surge models build upon the tried and tested rugged reliability of the VSL but with developments in the casing and impeller design, generating up to 30% greater performance whilst consuming less power.

Designed and manufactured in the UK with the simplicity of 5 models sharing as many common components as possible, it enables quicker lead times and even more competitive pricing.

Greater performance, reduced power and the same trusted reliability allows you to minimise both operational costs and maintenance costs whilst keeping your process running efficiently and reliably. The vertical range are suitable for all types of applications, including metal treatments, tank emptying, transfer and re-circulation amongst many other corrosive duties. All Surge pumps feature a standard column length of 400mm and are offered with optional extras including suction extensions, non-return valves, strainers and level control switches which are all readily available.

MINIMAL MAINTENANCE

The Surge range of vertical plastic pumps are able to run-dry indefinitely due to the pump's cantilever design without immersed bearings. They also feature a double balanced impeller, which creates a liquid ring seal preventing the liquid from backing up the pump shaft.

RUGGED DESIGN

All wetted parts are fabricated or machined from solid thermoplastic ensuring a very rugged and reliable pump. We offer two durable material options: Polypropylene and PVDF plus a choice of O-ring materials providing the ultimate corrosion resistance for your application. The Surge vertical pumps may be mounted internally or externally to the tank enabling valuable tank space to be fully utilised.



**2 YEARS
WARRANTY**



**DURABLE
THERMOPLASTIC**



**RUN DRY
DESIGN**



**CORROSION
RESISTANCE**



**MANUFACTURED
IN THE UK**

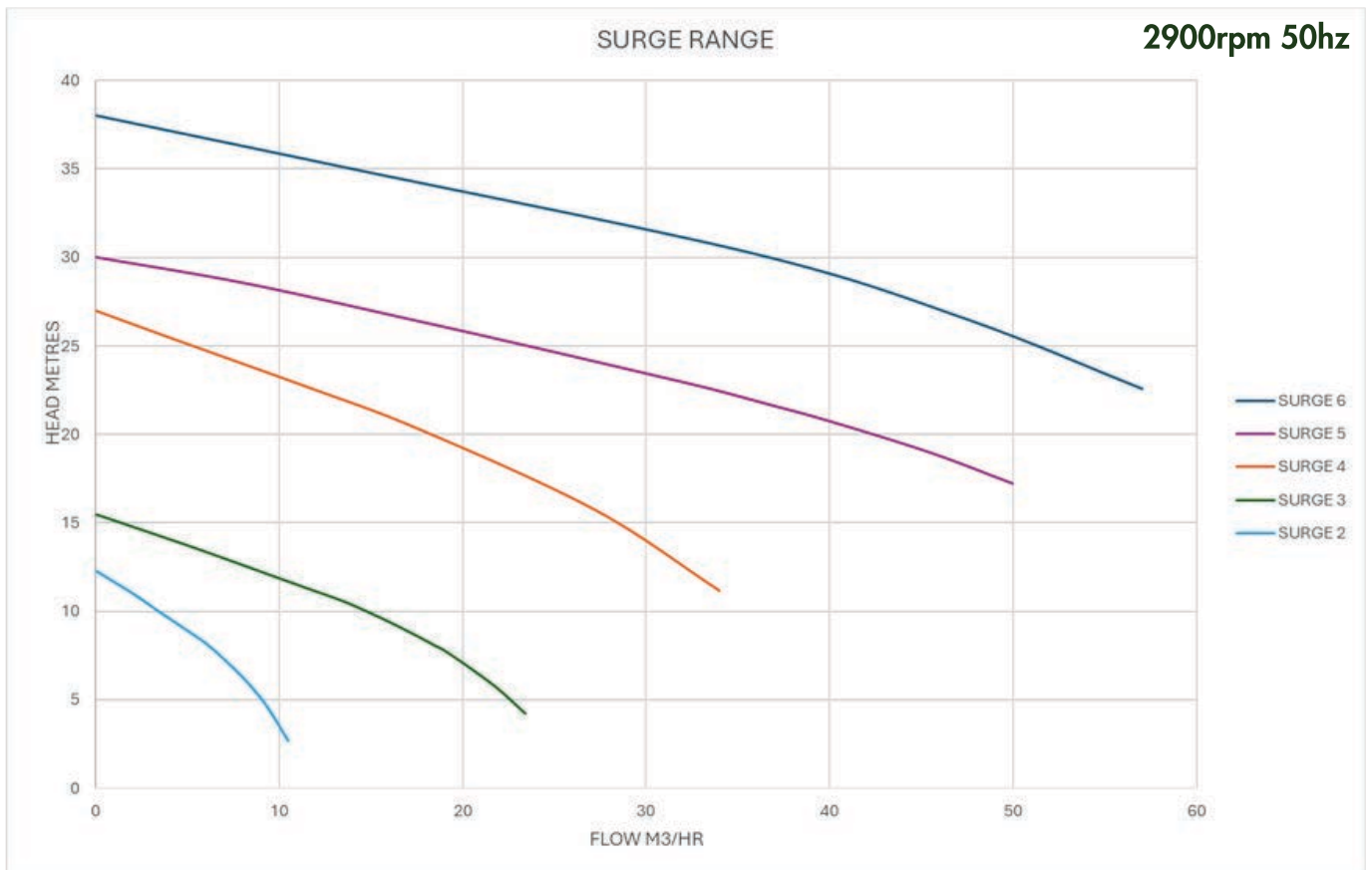
SURGE PUMP RANGE



VERTICAL, **SEAL-LESS**, THERMOPLASTIC, CENTRIFUGAL PUMPS

SURGE PUMP CURVES

Pump curves for the SURGE range of plastic vertical pumps



TECHNICAL SPECIFICATION

MODEL	SPEED (rpm)	RATED CAPACITY (M ³ /hr)	RATED HEAD (m)	MAX. CAPACITY (M ³ /hr)	MAX. HEAD (m)	MOTOR OUTPUT (kW)
Surge 2	2900	6	8	10	12	0.55
Surge 3	2900	14	10	23	15	1.5
Surge 4	2900	26	16	32	27	3
Surge 5	2900	36	22	50	30	5.5/7.5
Surge 6	2900	42	28	57	38	9.2

SURGE PUMP RANGE



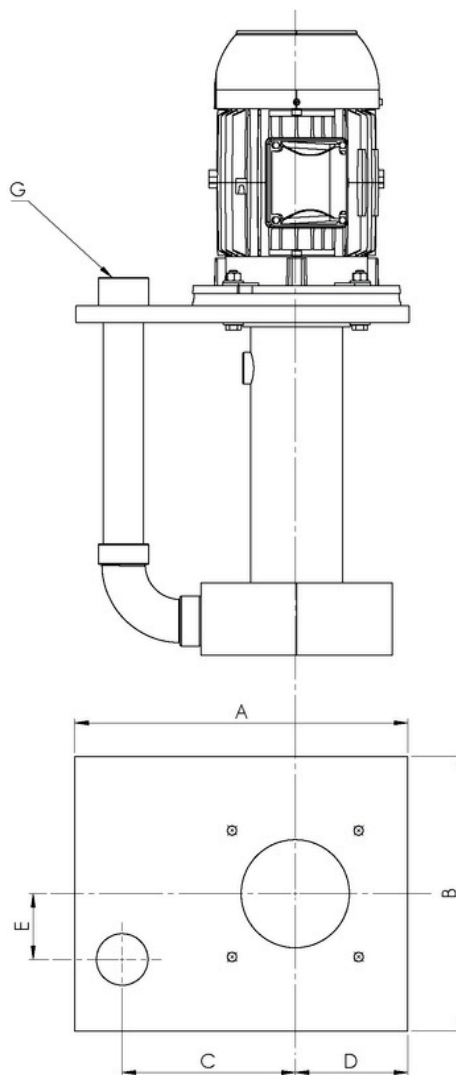
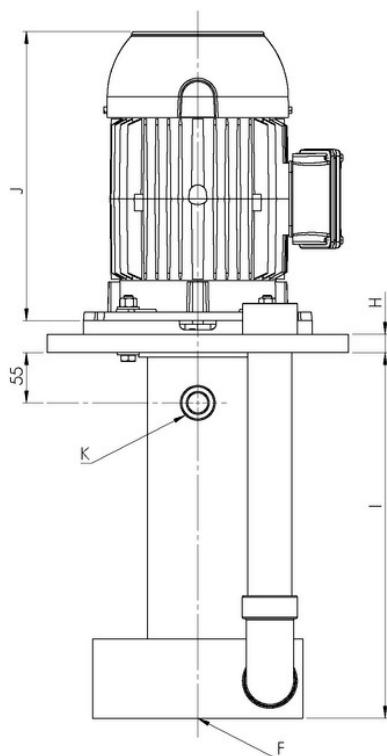
VERTICAL, **SEAL-LESS**, THERMOPLASTIC, CENTRIFUGAL PUMPS

CRESTPUMPS RANGE DIMENSIONS

For specific 3D CAD drawings or specific pump dimensions, please contact us at info@crestpumps.co.uk or telephone +44 (0) 1425 627700.

NOTE:

1. The total length and weight of the pump will differ depending on the brand of the motor.
2. All dimensions are in mm.
3. Assembly tolerances are +/- 3mm.



MODEL mm	MOUNT PLATE A	MOUNT PLATE B	OVERFLOW DEPTH	LENGTH I	INLET F	OUTLET G	OVERFLOW K
Surge 2	320	280	55	400	1 1/4" BSP F	1" BSP F	3/4" BSP F
Surge 3	400	330	55	400	1 1/2" BSP F	1 1/4" BSP F	3/4" BSP F
Surge 4	400	330	55	400	2" BSP F	1 1/2" BSP F	3/4" BSP F
Surge 5	480	360	55	400	2 1/2" BSP F	2" BSP F	3/4" BSP F
Surge 6	480	360	55	400	2 1/2" BSP F	2" BSP F	3/4" BSP F

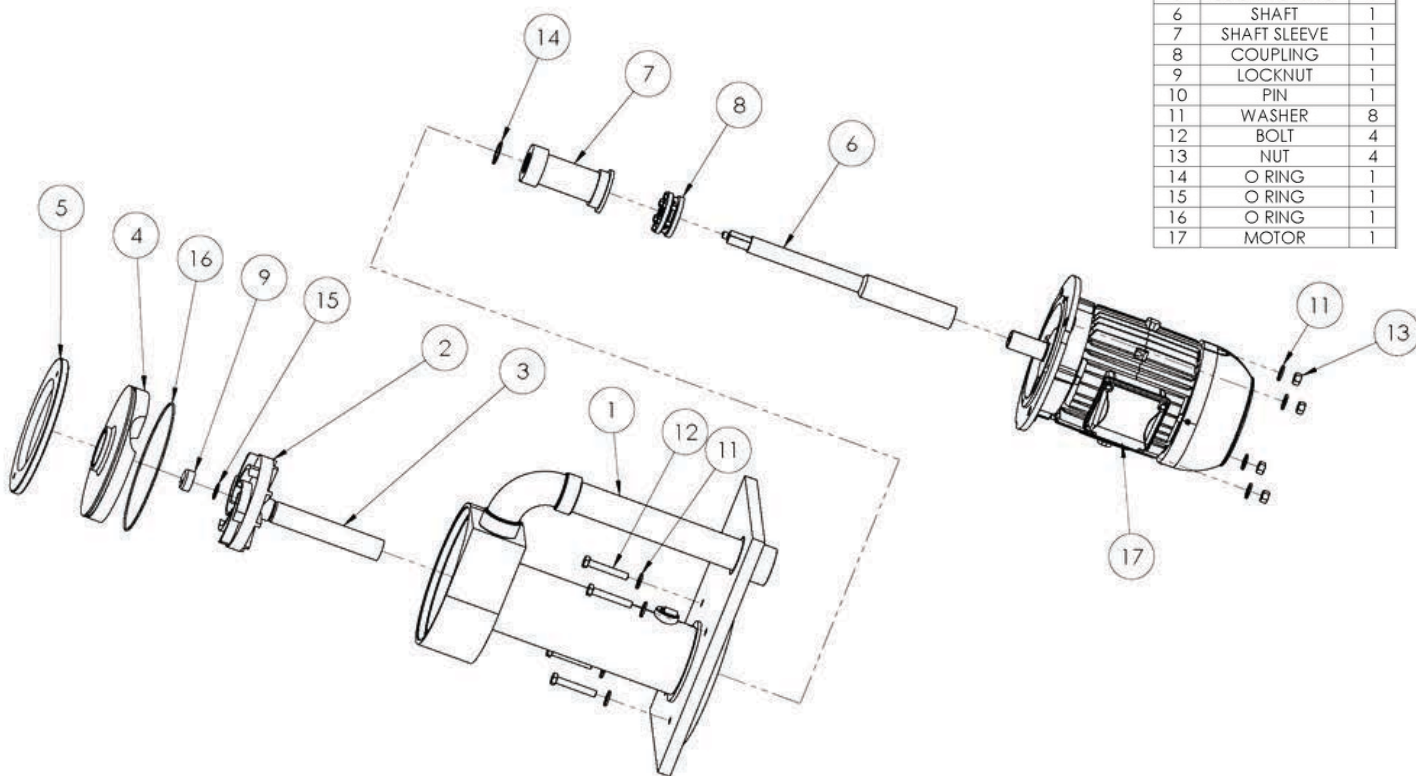
SURGE PUMP RANGE



VERTICAL, SEAL-LESS, THERMOPLASTIC, CENTRIFUGAL PUMPS

PARTS LIST

ITEM NO.	DESCRIPTION	QTY.
1	BODY	1
2	IMPELLER	1
3	IMPELLER SLEEVE	1
4	COVER PLATE	1
5	LOCKING RING	1
6	SHAFT	1
7	SHAFT SLEEVE	1
8	COUPLING	1
9	LOCKNUT	1
10	PIN	1
11	WASHER	8
12	BOLT	4
13	NUT	4
14	O RING	1
15	O RING	1
16	O RING	1
17	MOTOR	1



APPLICATIONS



CHEMICAL

Chemical applications include chemical transfer, dosing, re-circulation, filtration, fume scrubbing and tanker off-loading.



PETROCHEMICAL

Previous petrochemical installations include high temperature, high pressure, highly viscous applications as well as chemical injection, re-circulation, off-loading and solid handling.



WATER TREATMENT

Providing reliable process pumps to the UK's largest waste-water treatment providers, for chemical transfer, desalination, reverse osmosis, water treatment and tanker unloading.



PHARMACEUTICAL

Pharmaceutical companies have relied on Crest Pumps to provide pumps for ATEX requirements, chemical injection, CIP pumping, solid handling, high viscous medias and highly toxic applications.



BIOFUELS

Fully ATEX certified process pumps for transfer of liquids in explosive atmospheres, solids handling, tank unloading, recirculation and transfer.



ENERGY GENERATION

Pumps supplied for various energy generation applications, including wind turbine, solar, and Vanadium redox flow batteries.



MARINE

Centrifugal pumps supplied for various below deck applications including ballast water treatment, electrolysis, desalination and sea water cooling systems.